



\* NOT INTENDED  
FOR STABILISER USE

PATENT  
PENDING

## FEATURES

- MOST STABLE RAIL SOLUTION FOR THE GLOCK PLATFORM.
- EASY TO INSTALL WITH THE SUPPLIED HARDWARE.
- NO MODIFICATIONS TO YOUR GLOCK REQUIRED.
- WILL NOT DAMAGE YOUR FIREARM.

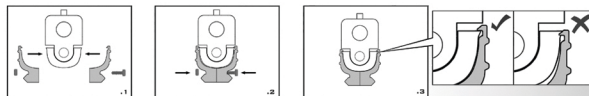
## SPECS

- WEIGHT: 16G.
- GLASS REINFORCED POLYMER.

# GR

## INSTALLATION

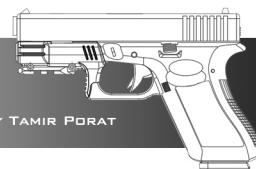
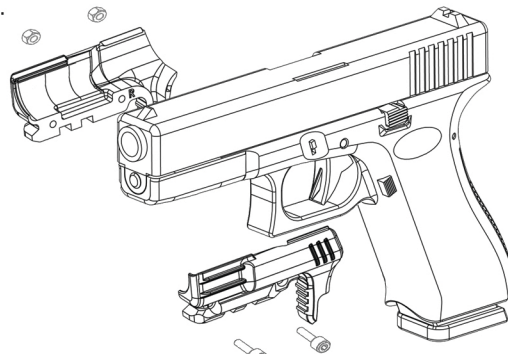
- PLACE THE TWO HALVES OF THE RAIL TOGETHER  
IN POSITION ON THE GUN.
- SECURE TOGETHER WITH THE SUPPLIED HARDWARE.



IF YOU HAVE ANY QUESTIONS, COMMENTS  
OR CONCERNS PLEASE CONTACT US AT:



[SERVICE@RECOVERTACTICAL.COM](mailto:SERVICE@RECOVERTACTICAL.COM)



DESIGNED BY TAMIR PORAT

## RAIL FOR GLOCK