



FEATURES

- ERGONOMIC DESIGN
- EASY TO INSTALL WITH THE SUPPLIED HARDWARE
- INCREASES BRACE LENGTH BY 20MM

SPECS

- WEIGHT: 50G
- LIGHTWEIGHT GLASS REINFORCED POLYMER

INSTALLATION

- REMOVE THE STRAP FROM THE BRACE
- INSERT THE BRACE EXTENSION (1) INTO THE BRACE OPENINGS
- INSERT THE PLUGS (2) FROM THE OPPOSITE SIDE
- SECURE THE PARTS WITH THE SUPPLIED HARDWARE

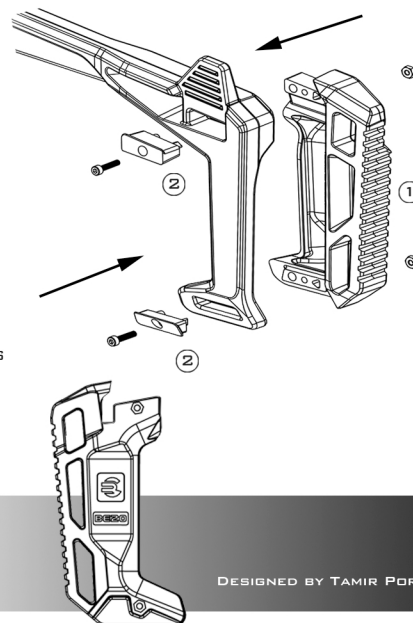
ONCE THE BE20 BUTT STOCK EXTENSION IS MOUNTED ON THE 20/20 STABILIZER WITH BRACE KIT, NFA RESTRICTIONS AND RULES APPLY, YOU ARE RESPONSIBLE FOR KNOWING YOUR STATE AND LOCAL LAWS AND COMPLYING WITH THEM. PLEASE BE ADVISED THAT YOU ARE RESPONSIBLE FOR THE PROPER AND LEGAL USE OF THE RECOVER 20/20 STABILIZER KIT.

BE20

IF YOU HAVE ANY QUESTIONS, COMMENTS
OR CONCERNS PLEASE CONTACT US AT:



SERVICE@RECOVERTACTICAL.COM



DESIGNED BY TAMIR PORAT

BRACE EXTENSION FOR
20 SERIES STABILIZER